

The background features a stylized green plant with three leaves on the left side. Below the plant, there are two overlapping, rounded shapes representing hills or soil mounds. The foreground mound is a solid dark teal color, while the background mound is a lighter shade of teal.

Soil health – Basque Country

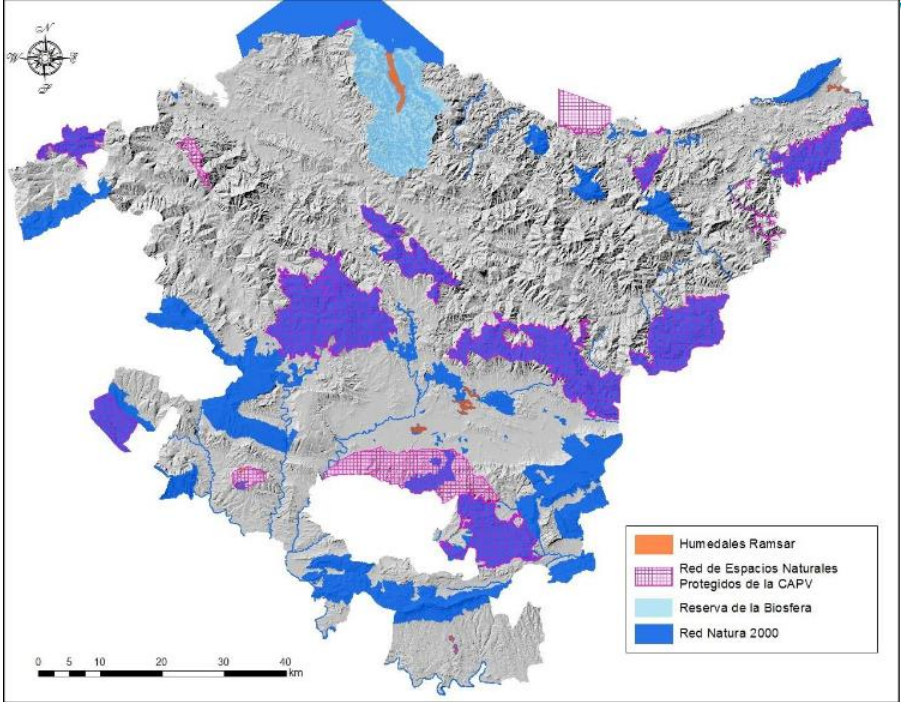
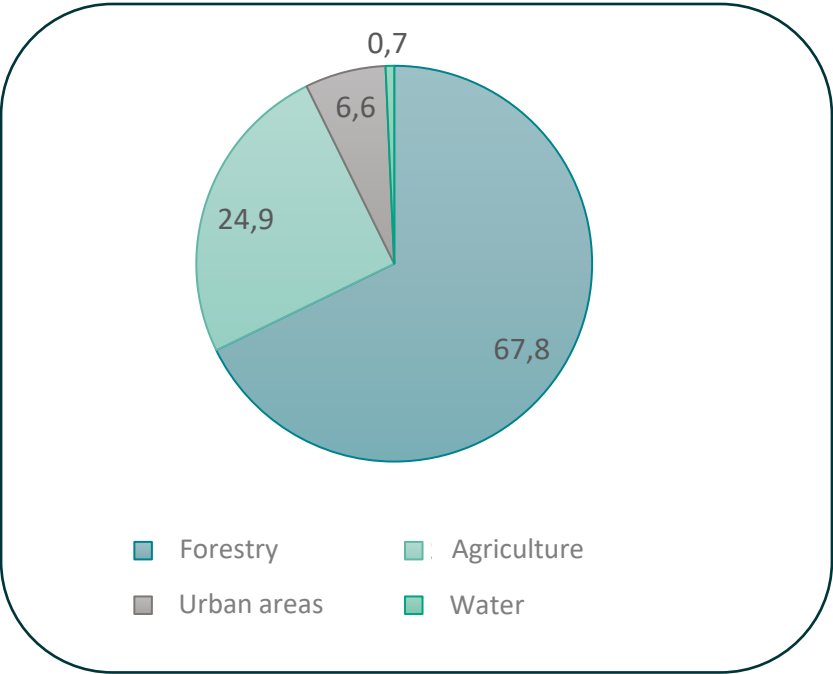
**Ana Alzola, Ihobe (Basque Government)
5th November 2024**

Soil Health related regulatory context



European knowledge platform on soil and land management

Surface	7.234,8 Km ²
Population	2.291.213 inhab.
Population dens.	303 inhab/km ²
Administration	Autonomous Government
	3 Provinces
	251 Municipalities

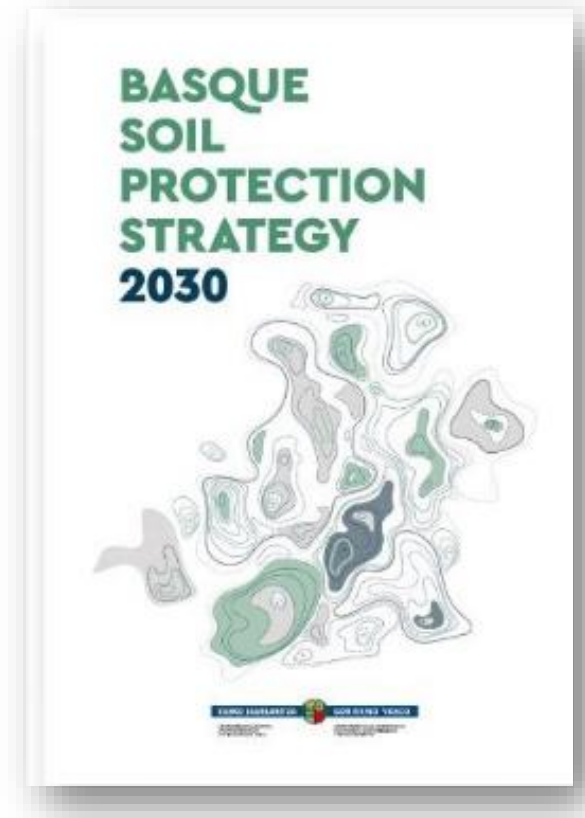


Soil Health related regulatory context



European knowledge platform on soil and land management

- Law 2/2006, of 30 June, on land and urban development
- *Law 4/2015, of 25 June 2015, for the prevention and correction of soil contamination*
- *New environmental legislation:*
 - *Law 10/2021, of 9 December, on Environmental Administration*
 - *Law 9/2021, of 25 November, on the Conservation of the Natural Heritage of the Basque Country*
 - *Law 1/2024, of 8 February, on Energy Transition and Climate Change*
- *Sectorial legislation:*
 - *Spatial Planning Guidelines (DOT, 2019) + Land and urban development*
 - *Agriculture*
 - *Forestry*
- *Need for a regulation on Soil protection?*
- ***Environmental framework programme 2030 (2023)***
- ***Soil protection strategy 2030 (2022)***



Soil Health related regulatory context



European knowledge platform on soil and land management

SUSTAINABLE MANGEMENT OF LAND USES



- SPATIAL PLANNING

HEALTH PROTECTION



- INDUSTRIAL CONTAMINATED SITES

WATER RESOURCES PROTECTION



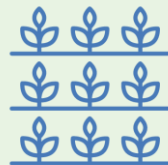
- AGRICULTURE, LIVESTOCK FARMING AND FORESTRY

FOOD SAFETY ASSURANCE



- EXCAVATED SOIL AND CIRCULAR ECONOMY

RATIONAL USE OF RESOURCES



- NATURAL ENVIRONMENT: NATURAL SOILS

BIODIVERSITY PROTECTION



- MITIGATION AND ADAPTATION TO CLIMATE CHANGE

FIGHTING CLIMATE CHANGE



- CROSS-CUTTING ACTIONS

Soil Health related regulatory context



European knowledge platform on soil and land management

Secretariat



Economic development, Sustainability and Environment

Agriculture, Fisheries and Food Policy

Spatial Planning, Town Planning and y Urban Regeneration

Health



udalsarea 2030



Sprilur



Soil management and land planning



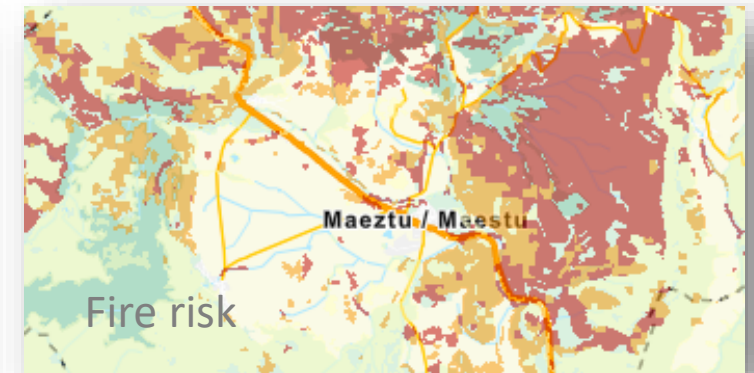
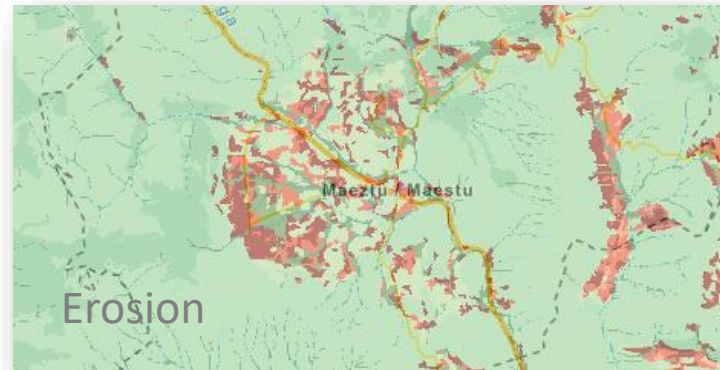
- NO NET LAND TAKE principle
 - **Soil Protection Strategy 2030:** Overall goal
 - **DOT: 1.1.** To slow down land occupation, favouring a mix of uses and the regeneration and reuse of degraded areas and to slow down the occupation of those areas that are catalogued and protected as having a high agrological capacity.
- SOIL HEALTH/QUALITY
 - **DOT.** Chapter on circular economy. Soil as a resource

1. Integrate the circular economy strategy into spatial and urban planning, managing available land use according to its valuation as a scarce Good.
2. Promote the achievement of the objective of 'zero net land degradation'.
3. Encourage the reuse of already anthropised soils.
4. Ensure soil quality as an essential resource to meet global needs.
5. Maintain or enhance soil functions.
6. Maintain soil biodiversity.
7. Promote the restoration of the natural functions.

Which tools/instruments are available? European knowledge platform on soil and land management

Built together on existing tools

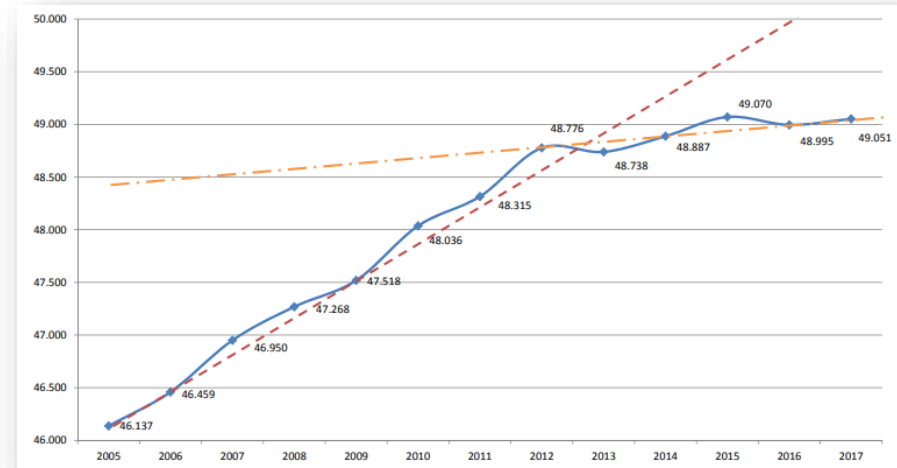
- Spatial Data Infrastructure GEOEUSKADI ([Visor de geoEuskadi](#))



Which tools/instruments are available? European knowledge platform on soil and land management

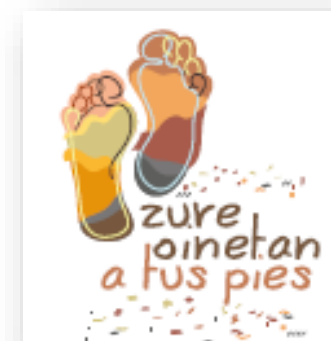
- Soil health/quality data
 - URBAN AREAS: Soil contamination
 - RURAL AREAS: Monitoring system under construction
- Spatial planning guidelines and urban development plans
 - Urban growth perimeters
 - Artificialized soil indicator
- Tools (to be updated/developed):
 - Sustainable urban planning
 - Strategic environmental impact assessment
 - Economic instruments/subsidies
 - Green public procurement

Conserve and assign uses that take advantage of the potential of the soil without deteriorating it.



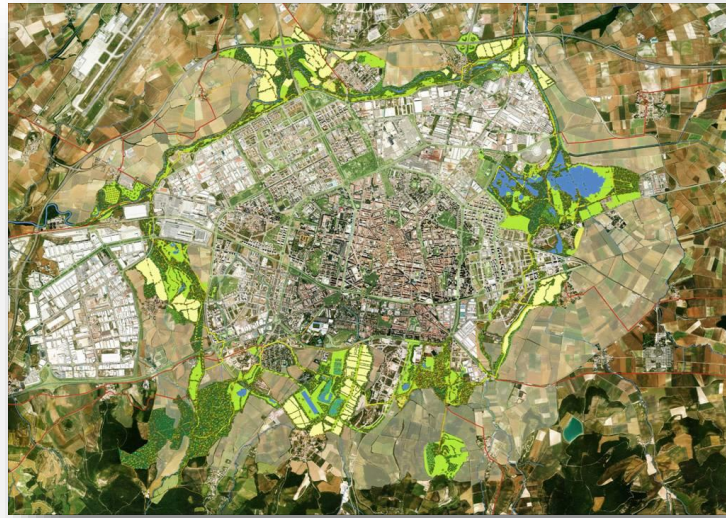
Which tools/ instruments are available?

- Cooperation
 - Multilateral collaboration projects:
 - Brownfield regeneration (VISA-SPRILUR-IHOBE)
 - Participation in international networks and projects (Common Forum on Contaminated Land in Europe, SOILveR, CASRI)
- Awareness rising plan. Citizen Science. LURZAIN
- Knowledge map on soil related topics

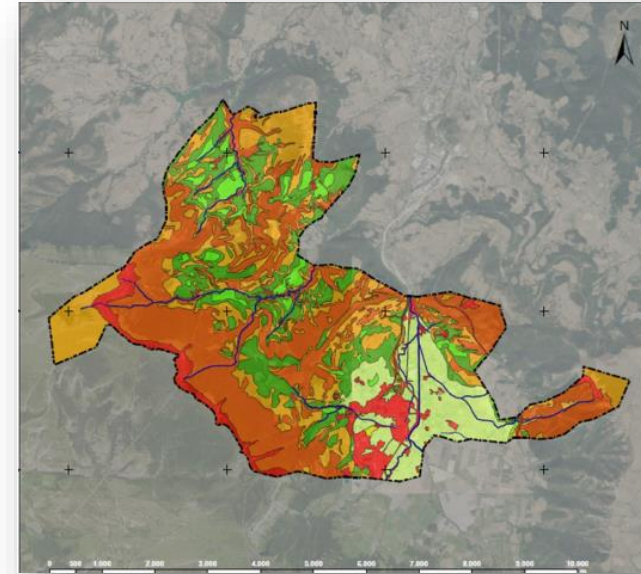


Which tools/instruments are available?

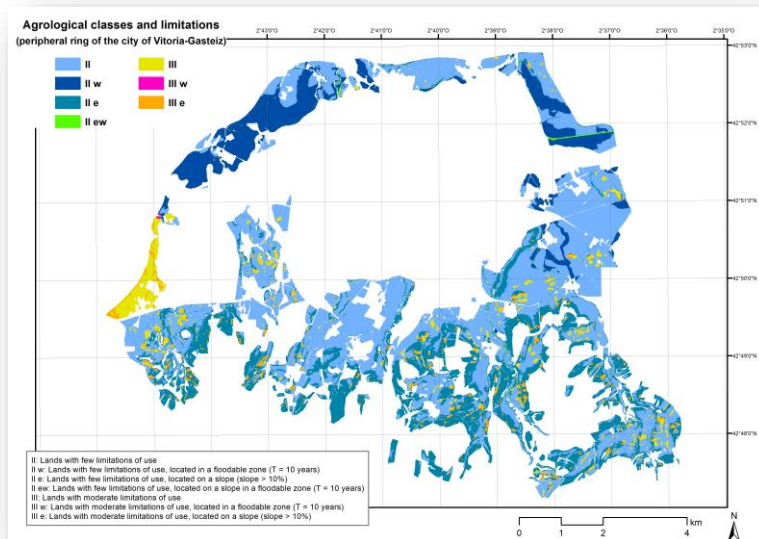
- Case studies and nature based solutions



Vitoria-Gasteiz. Green and yellow belts



Orduña. Soil inventory



Sestao. Natural functions in an old industrial site



What research has been done or has been planned?

- Soil data system. Soil health observatory
- Soil health indicators
- Environmental framework programme 2030. Sustainable Territorial Cohesion
 - **Goal: maintain and promote the multifunctionality of the Basque territory, by**
 - defining models for the evaluation and management of the functionality of ecosystems
 - coordination between public and private agents to make this multifunctionality effective
- Instruments for soil protection at local scale (urban planning). Land take hierarchy
- Instruments to promote the reuse of vacant land
 - Preliminary inventory
 - Road map (first draft)
- Economic instruments. Subsidies:
 - Identification and detailed study
 - Coordination
- Best practices/NBS/Sustainable soil management local scale
- PFAS
- Climate change-Carbon stocks in relation to voluntary carbon markets



What are the main challenges to be addressed?

- Which **data** do we need to address soil health? How to relate this data to real and potential **soil functions**?
- How to consider this information into **policies**?
- Design rigorous instruments that can be used by the different **levels of administration** to take decisions and action? Local scale?
- How to **foster inter-institutional cooperation** to advance towards societal challenges taking into account the different interests that converge in soil?
- How to **connect different policies** in practice to reach common goals?

Questions / Remarks?

info@soilver.eu